

Effects of Angiotensin-Converting Enzyme Inhibitor Therapy on Clinical Outcome in Patients Undergoing Coronary Artery Bypass Grafting
Antonio Miceli, Radek Capoun, Carlo Fino, Pradeep Narayan, Alan J. Bryan, Gianni D. Angelini, and Massimo Caputo
J. Am. Coll. Cardiol. published online Aug 12, 2009;
doi:10.1016/j.jacc.2009.07.008

This information is current as of September 29, 2009

The online version of this article, along with updated information and services, is located on the World Wide Web at:
<http://content.onlinejacc.org/cgi/content/full/j.jacc.2009.07.008v1>

JACC

JOURNAL *of the* AMERICAN COLLEGE *of* CARDIOLOGY



EXPEDITED PUBLICATION

Effects of Angiotensin-Converting Enzyme Inhibitor Therapy on Clinical Outcome in Patients Undergoing Coronary Artery Bypass Grafting

Antonio Miceli, MD, Radek Capoun, MD, Carlo Fino, MD, Pradeep Narayan, MD, Alan J. Bryan, MD, Gianni D. Angelini, MD, MCH, Massimo Caputo, MD, MCH
Bristol, United Kingdom

Objectives	This study evaluates the effect of pre-operative angiotensin-converting enzyme inhibitor (ACEI) therapy on early clinical outcomes after coronary artery bypass grafting (CABG).
Background	Therapy with ACEIs has been shown to reduce the rate of mortality and prevent cardiovascular events in patients with coronary artery disease. However, their pre-operative use in patients undergoing CABG is still controversial.
Methods	A retrospective, observational, cohort study was undertaken of prospectively collected data on 10,023 consecutive patients undergoing isolated CABG between April 1996 and May 2008. Of these, 3,052 patients receiving pre-operative ACEI were matched to a control group by propensity score analysis.
Results	Overall rate of mortality was 1%. Pre-operative ACEI therapy was associated with a doubling in the risk of death (1.3% vs. 0.7%; odds ratio [OR]: 2.00, 95% confidence interval [CI]: 1.17 to 3.42; $p = 0.013$). There was also a significant difference between the ACEI and control group in the risk of post-operative renal dysfunction (PRD) (7.1% vs. 5.4%; OR: 1.36, 95% CI: 1.1 to 1.67; $p = 0.006$), atrial fibrillation (AF) (25% vs. 20%; OR: 1.34, 95% CI: 1.18 to 1.51; $p < 0.0001$), and increased use of inotropic support (45.9% vs. 41.1%; OR: 1.22, 95% CI: 1.1 to 1.36; $p < 0.0001$). In a multivariate analysis, pre-operative ACEI treatment was an independent predictor of mortality ($p = 0.04$), PRD ($p = 0.0002$), use of inotropic drugs ($p < 0.0001$), and AF ($p < 0.0001$).
Conclusions	Pre-operative therapy with ACEI is associated with an increased risk of mortality, use of inotropic support, PRD, and new onset of post-operative AF. (J Am Coll Cardiol 2009;54:000-00) © 2009 by the American College of Cardiology Foundation

Angiotensin-converting enzyme inhibitors (ACEIs) have been shown to reduce the rate of mortality and to prevent cardiovascular events in patients with coronary artery disease (1–4), especially after acute myocardial infarction (MI) (5–7). The authors of the EUROPA (European Trial on Reduction of Cardiac Events With Perindopril in Stable Coronary Artery Disease) study (4) showed a 14% reduction in total rate of mortality, nonfatal MI, unstable angina, and cardiac arrest. Moreover, in a meta-analysis of 4 trials that included 98,496 patients with early MI, treatment with ACEI was associated with an average 7% proportional reduction in mortality within 30 days (5). ACEIs, through the reduction of angiotensin II and increased bradykinin availability, explicate their cardioprotective properties on

left ventricular afterload and remodeling, improving cardiac hemodynamics, and reducing ventricular mass (3,8,9).

In addition to lowering blood pressure, ACEIs possess a vasculoprotective and anti-ischemic action through their antiatherosclerotic, antithrombotic, anti-inflammatory effects (10–12). Consequently, most patients with coronary artery disease receive these drugs. Nevertheless, there are still significant controversies regarding the pre-operative use of ACEIs in patients undergoing coronary artery bypass grafting (CABG). It has been hypothesized by several authors (13–16) that the pre-operative administration of ACEI in these patients contributes to lowering of systemic vascular resistance and vasoplegia in the early post-operative phase, resulting in hypotension and renal dysfunction.

Authors of the IMAGINE (Ischemia Management With Accupril Post Bypass Graft via Inhibition of Angiotensin Converting Enzyme) study (17) reported that, in CABG patients at low risk of cardiovascular events, routine early initiation of ACEI therapy does not improve clinical outcome up to 3 years after surgery and may increase adverse

From the Bristol Heart Institute, University of Bristol, United Kingdom. This paper was presented at the 58th Annual Scientific Session of the American College of Cardiology, March 28 to 31, 2009, Orlando, Florida.

Manuscript received February 13, 2009; revised manuscript received June 29, 2009, accepted July 8, 2009.

**Abbreviations
and Acronyms****ACEI** = angiotensin-
converting enzyme inhibitor**AF** = atrial fibrillation**CABG** = coronary artery
bypass grafting**CI** = confidence interval**MI** = myocardial infarction**NYHA** = New York Heart
Association**OR** = odds ratio**PRD** = post-operative renal
dysfunction

events during the first 3 months. Others authors (18–20) concluded that pre-operative treatment with ACEIs does not cause hypotension and can safely be used in patients undergoing cardiac surgery. A national survey in the United Kingdom revealed that the majority of cardiac surgeons believe that the use of pre-operative ACEIs increases use of fluids, inotropes, and vasoconstrictors. However, only 39% of respondents practiced discontinuing the drug before operation (21). The aim of the present

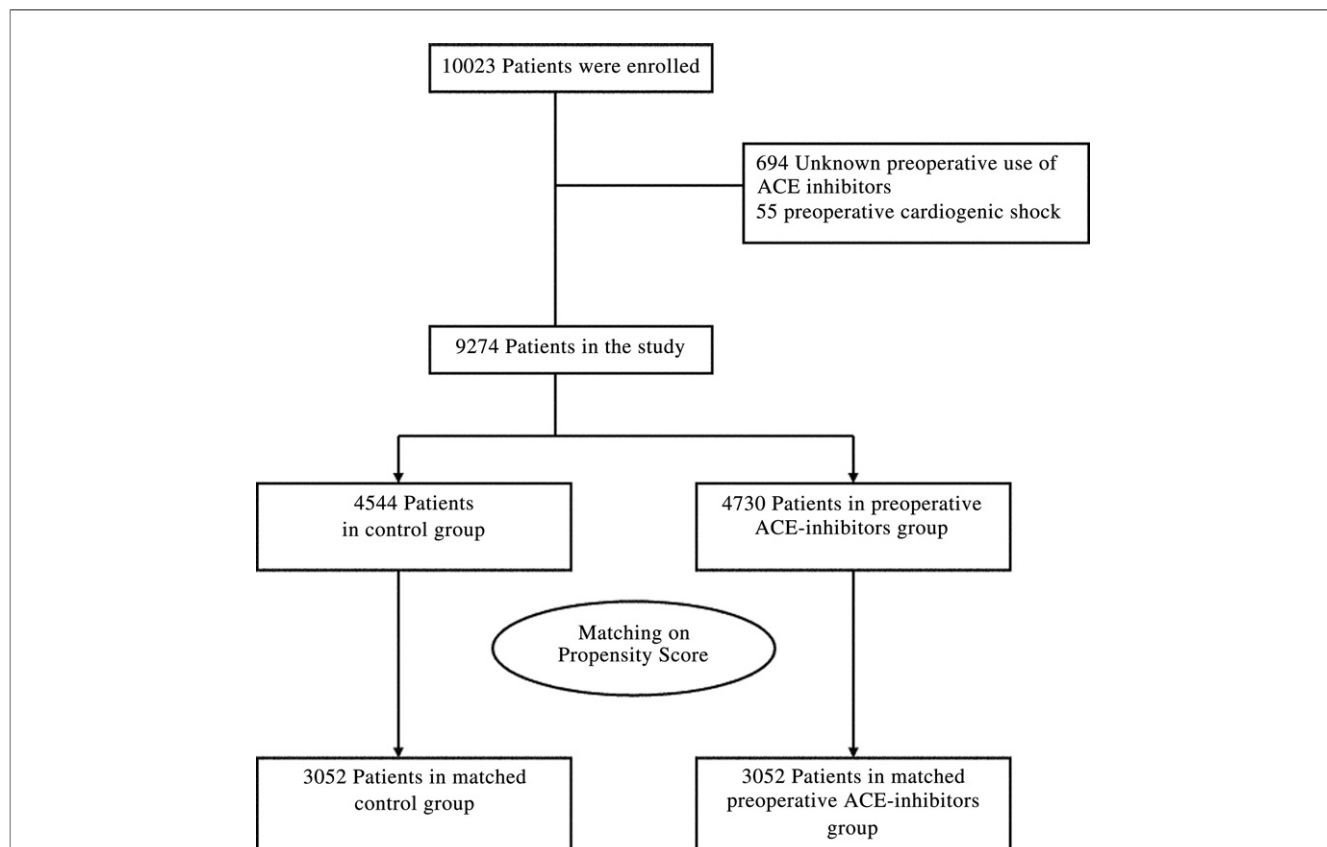
study was, therefore to review our institutional database to evaluate the effects of pre-operative ACEI treatment on early clinical outcomes after CABG.

Methods

Patient selection. This was a retrospective, observational, cohort study of prospectively collected data from consecutive patients who underwent isolated CABG at the Bristol

Heart Institute between April 1996 and May 2008. The study was approved by the clinical audit committee of the University Hospital Bristol NHS Foundation Trust, and individual consent was waived. The data collection form is entered in a database (Patient Analysis & Tracking System, Dendrite Clinical Systems, London, United Kingdom) and includes 5 sections that are filled in consecutively by anesthetists, surgeons, the intensive care unit, the high-dependency unit, and ward nurses. The base sample contained detailed clinical information on approximately 10,023 patients. Exclusion criteria were patients who had unknown ACEI treatment before surgery and those with pre-operative cardiogenic shock. The final sample size was 9,274 patients, of which 4,730 (51%) received pre-operative ACEI. To reduce the effect of treatment selection bias and potential confounding in this observational study, we used a propensity score-matching analysis to evaluate the effect of pre-operative treatment of ACEI on our end points (22). Finally, 3,052 patients on ACEI treatment were matched to a control group (Fig. 1).

End points and definitions. The primary end point was in-hospital mortality, defined as any death occurring within 30 days of operation. Secondary end points were as follows: post-operative renal dysfunction (PRD), atrial fibrillation

**Figure 1** Study Profile

ACE = angiotensin-converting enzyme.

(AF), MI, stroke, and post-operative inotropic drug use. Pre-operative use of an ACEI, including angiotensin receptor blockers, was defined as administration within 24 h before surgery. Priority of surgery was defined as follows: emergency (the surgery should be performed within hours to prevent morbidity or death), urgent (medical factors requiring the patient to stay in hospital waiting for an operation), or elective (the clinical status of the patient allows discharge from hospital with readmission for surgery at a later date). The decision to perform an off-pump or on-pump CABG technique was based on individual surgeon preference.

A diagnosis of post-operative MI was based on the presence of Q waves >0.04 ms and/or a reduction in R waves >25% in at least 2 contiguous leads on electrocardiogram (ECG). The PRD was defined as a serum creatinine level >200 $\mu\text{mol/l}$ plus an increase of at least 1.5 times pre-operative baseline concentrations. New onset of post-operative AF was defined as any duration at any time in the post-operative period on the basis of a rhythm strip or 12-lead ECG. A diagnosis of stroke was made if there was evidence of new neurological deficit with morphological substrate confirmed by computed tomography or nuclear magnetic resonance imaging.

Anesthetic, surgical technique, and post-operative management. Anesthetic and surgical techniques were standardized for all patients and have been reported previously (23,24). In brief, for patients undergoing on-pump CABG, cardiopulmonary bypass was instituted with the use of ascending aortic cannulation and 2-stage venous cannulation of the right atrium. The membrane oxygenator was primed with 1,000 ml of Hartman's crystalloid, 500 ml of Gelofusine (B. Braun, Melsungen, Germany), 0.5 g/kg mannitol, 7 ml of 10% calcium gluconate, and 6,000 IU heparin. Alpha-stat pH management was used, and the systemic temperature was kept between 34°C and 36°C. Myocardial protection was achieved with intermittent hyperkalaemic warm blood cardioplegia. For off-pump CABG surgery, the Bristol technique was used to expose the coronaries and provide stabilization to undertake the anastomosis (24). At the end of surgery, patients were transferred to the intensive care unit and managed according to the unit protocol (23,24).

Statistical analysis. Continuous data were expressed as mean \pm SD, and categorical data as percentages. The Kolmogorov-Smirnov test was used to check for normality of data in the 2 groups before further analysis. Differences between ACEI user and nonuser were compared with the use of a chi-square test for categorical variables and *t* or Wilcoxon rank sum tests, as appropriate, for continuous variables.

To reduce the effect of selection bias and potential confounding in this observational study, we developed a propensity score analysis. The propensity for ACEI use was determined without regard outcomes by the use of a nonparsimonious multiple logistic-regression analysis. All

the variables listed in Table 1 were included in the analysis. A propensity score, indicating the predicted probability of receiving ACEI treatment, was then calculated from the logistic equation for each patient.

Finally, we used the propensity score to match ACEI users to nonusers (1:1 match). Specifically, we matched each patient with ACEI use to one with non-ACEI use who had a propensity score that was identical to 5 digits. If this could not be done, we then proceeded to the next highest digit match (4-, 3-, 2-, and 1-digit) to make the best matches, in a hierarchical sequence until no more matches could be made. After the propensity score match was performed, we assessed differences between the 2 groups with the paired *t* test or Wilcoxon signed rank test for continuous variables, and McNemars's test or marginal homogeneity test for categorical variables. Conditional logistic regression was performed to identify risk factors for rate of mortality, PRD, post-operative AF, and post-operative use of inotropic support. Results are reported as percentages and odds ratios (ORs) with 95% confidence interval (CI). All reported *p* values are 2-sided, and *p* values of <0.05 were considered to

Table 1 Baseline Characteristics of the Patients

Variable	ACEI (n = 4,730)	No ACEI (n = 4,544)	p Value
Demographics			
Age, mean (SD), yrs	65.2 (9.1)	64.2 (9.2)	<0.0001
Female	844 (17.8)	871 (19.2)	0.106
BSA	1.9 (0.2)	2 (0.2)	<0.0001
Cardiovascular risk factors			
Hypertension	3,522 (74.5)	2,669 (58.7)	<0.0001
Smoker	2,013 (42.6)	2,684 (59.1)	<0.0001
Diabetes mellitus	969 (20.5)	507 (11.2)	<0.0001
CCS class 3 to 4	2,466 (52)	2,467 (54.3)	0.039
NYHA functional class III to IV	1,150 (32.8)	1,377 (30.3)	0.011
Previous MI	2,771 (58.6)	1,593 (35.1)	<0.0001
EF, %			<0.0001
Good (>50)	3,177 (67.2)	3,627 (79.8)	
Fair (30–50)	1,241 (26.2)	822 (18.1)	
Poor (<30)	312 (6.6)	95 (2.1)	
History of AF	179 (3.8)	125 (2.8)	0.006
COPD	449 (9.5)	404 (8.9)	0.334
Vascular disease	482 (10.2)	393 (8.6)	0.012
Creatinine, mean (SD), mol/l	109.6 (30.7)	110.4 (36.3)	0.2
Redo surgery	116 (2.5)	115 (2.5)	0.861
CAD, mean (SD)	2.63 (0.59)	2.57 (0.63)	<0.0001
LMS disease	1,032 (21.8)	839 (18.5)	<0.0001
Priority			<0.0001
Elective	2,354 (49.8)	2,788 (61.4)	
Urgent	2,317 (49)	1,691 (37.2)	
Emergent	59 (1.2)	65 (1.4)	
No. of grafts, mean (SD)	2.72 (0.78)	2.69 (0.84)	0.094
OPCAB	2,628 (55.6)	1,928 (42.2)	<0.0001

Values are expressed as n (%) unless specified otherwise.

ACEI = angiotensin-converting enzyme inhibitor; AF = atrial fibrillation; BSA = body surface area; CAD = coronary artery disease; CCS = Canadian Cardiovascular Society; COPD = chronic obstructive pulmonary disease; EF = ejection fraction; LMS = left main stem; MI = myocardial infarction; NYHA = New York Heart Association; OPCAB = off-pump coronary artery bypass grafting.

indicate statistical significance. All statistical analysis was performed with SPSS version 15.0 (SPSS Inc., Chicago, Illinois) and StatsDirect (version 2.7.2, StatsDirect Ltd., Cheshire, United Kingdom).

Results

Patients characteristics and clinical outcomes. Among 9,274 patients in the study, 4,730 (51%) were on ACEI treatment, and 4,544 (49%) were not. Baseline characteristics of the study population are shown in Table 1. ACEI users were older and had a greater body surface area; they were more likely to have a lower angina functional class, greater prevalence of hypertension, diabetes, to be non-smokers, to have vascular and coronary artery disease, as well as previous history of MI and AF. Patients taking ACEI were also more likely to have a lower ejection fraction, greater New York Heart Association (NYHA) functional class, and greater prevalence of urgent operations. Finally, the prevalence of off-pump procedures was greater in the ACEI users than in nonusers. After performing propensity score analysis for the entire population, 3,052 patients receiving pre-operative ACEI were matched to a control group. In the matched cohorts, pre-operative characteristics and the use of off pump procedures were similar in both groups (Table 2).

Overall rate of mortality was 1%. Pre-operative ACEI therapy was associated with a doubling in the risk of death (1.3%, 40 patients vs. 0.7%, 20 patients, OR: 2.00, 95% CI: 1.17 to 3.42; $p = 0.013$). There was a significant difference between the ACEI and control group in the risk of PDR (7.1%, 217 patients vs. 5.4%, 167 patients, OR: 1.36, 95% CI: 1.1 to 1.67; $p = 0.006$), AF (25%, 763 patients vs. 20%, 610 patients, OR: 1.34, 95% CI: 1.18 to 1.51; $p < 0.0001$), and use of inotropic support (45.9%, 1,401 patients vs. 41.1%, 1,254 patients, OR: 1.22, 95% CI: 1.1 to 1.36; $p < 0.0001$). There were no significant difference in post-operative MI ($p = 0.27$) or cerebral events ($p = 0.26$) between the 2 groups (Fig. 2). A conditional logistic regression was performed to identify risk factors for rate of mortality, PRD, post-operative AF, and post-operative inotropic drug support.

Mortality. Pre-operative ACEI treatment was an independent predictor of mortality (OR: 2.83, 95% CI: 1.03 to 7.8; $p = 0.04$). Other independent risk factors were age and NYHA functional class III to IV (Table 3).

Post-operative use of inotropic support. Multivariate analysis showed that ACEI treatment was associated with an increased use of inotropic support post-operatively (OR: 1.17, 95% CI: 1.07 to 1.29; $p < 0.0001$). Additional risk factors were age, female sex, pre-operative renal function, redo surgery, numbers of coronaries diseased, left main stem disease, pre-operative ejection fraction, and nonelective operations (Table 4).

Risk of PRD. The ACEI users had a significant increased risk of PRD (OR: 1.7, 95% CI: 1.22 to 2.38; $p = 0.0002$).

Table 2 Baseline Characteristics of the Propensity-Matched Patients

Variable	ACEI (n = 3,052)	No ACEI (n = 3,052)	p Value
Demographics			
Age, mean (SD), yrs	64.9 (9.1)	64.8 (9)	0.5
Female	596 (19.5)	589 (19.3)	0.85
BSA	1.94 (0.25)	1.95 (0.28)	0.28
Cardiovascular risk factors			
Hypertension	2,070 (67.8)	2,096 (68.7)	0.46
Smoker	1,561 (51.1)	1,533 (50.2)	0.46
Diabetes mellitus	440 (14.4)	430 (14.1)	0.73
CCS class 3 to 4	1,642 (53.8)	1,601 (52.5)	0.3
NYHA functional class III to IV	996 (32.6)	942 (30.9)	0.14
Previous MI	1,417 (46.4)	1,403 (46)	0.7
EF, %			0.2
Good (>50)	2,254 (73.9)	2,270 (74.4)	
Fair (30–50)	673 (22.1)	691 (22.6)	
Poor (<30)	125 (4.1)	91 (3)	
History of AF	93 (3)	100 (3.3)	0.65
COPD	241 (7.9)	242 (7.9)	0.96
Vascular disease	289 (9.5)	292 (9.6)	0.93
Creatinine, mean (SD), mol/l	110.2 (32.9)	109 (31.4)	0.78
Redo surgery	81 (2.7)	84 (2.8)	0.86
CAD, mean (SD)	2.61 (0.61)	2.6 (0.62)	0.45
LMS disease	630 (20.6)	608 (19.9)	0.5
Priority			0.81
Elective	1,715 (56.2)	1,743 (57.1)	
Urgent	1,306 (42.8)	1,259 (41.3)	
Emergent	31 (1)	50 (1.6)	
No. of grafts, mean (SD)	2.7 (0.8)	2.7 (0.82)	0.82
OPCAB	1,496 (49)	1,500 (49.1)	0.94

Values are expressed as n (%) unless specified. By the use of greedy matching, 245 patients were matched on all 5 digits, 1,114 were matched on 4 digits, 1,151 on 3 digits, 484 on 2 digits, and 58 were matched on 1 digit. The mean absolute difference in propensity score (SD) between matched pair was 0.00076 (0.0036).

Abbreviations as in Table 1.

Additional risk factors for PRD were age, pre-operative renal function and NYHA functional class III to IV (Table 5).

Post-operative AF. We found that ACEI therapy was an independent risk factor for post-operative AF (OR: 1.33, 95% CI: 1.17 to 1.51; $p < 0.0001$). Other risk factors were age, chronic obstructive pulmonary disease, and history of AF (Table 6).

Discussion

This study demonstrates that pre-operative administration of ACEI in patients undergoing CABG is associated with a significant increased in perioperative mortality, PRD, AF, and use of inotropic support. The effect of ACEI therapy on early clinical outcomes in patients undergoing CABG is still controversial. Lazar (25) proposed that the use of ACEI can benefit patients undergoing cardiac surgery by minimizing perioperative ischemia and reducing long-term cardiovascular events, not only for their antihypertensive effects but also because of their vasculoprotective and antiatherogenic properties. He concluded that all patients undergoing CABG should receive ACEI pre-operatively with a sensible dosing

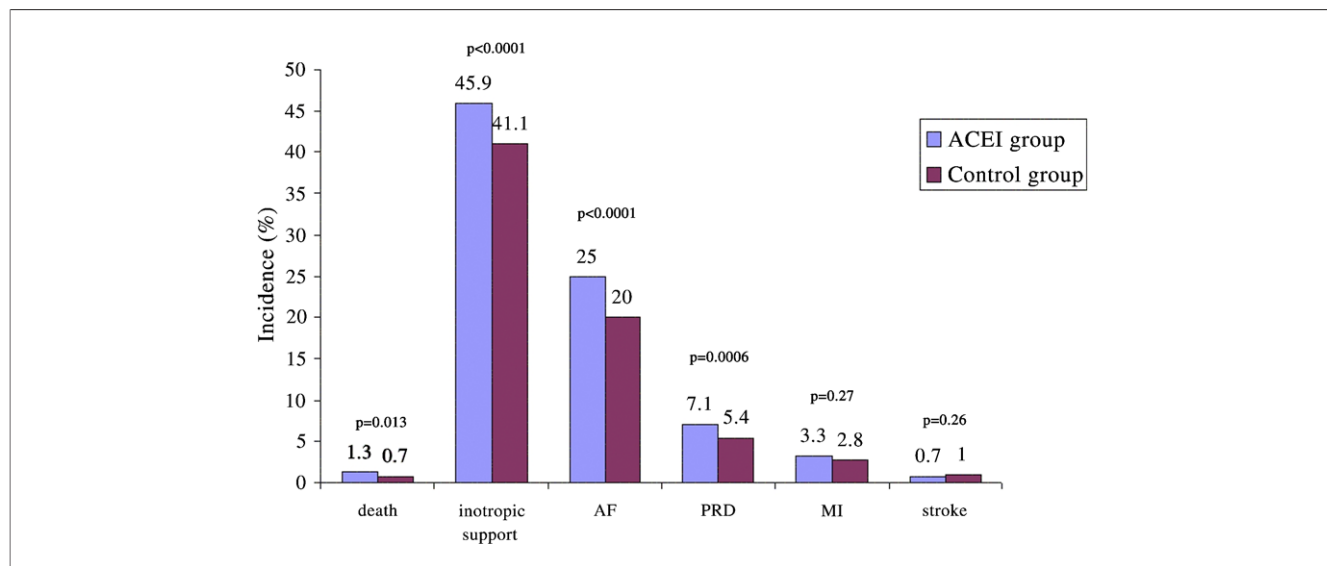


Figure 2 Clinical Outcomes in Propensity-Matched Cohort

ACEI = angiotensin-converting enzyme inhibitors; AF = atrial fibrillation; MI = myocardial infarction; PRD = post-operative renal dysfunction.

regimen that minimizes hypotension. Devbhandari et al. (21) published the result of a United Kingdom national survey to address the issue whether it is beneficial or not to discontinue ACEI before cardiac surgery. They found that 35% of respondents believed that ACEI should be withheld before surgery, and most (63%) believed that their use leads to vasodilation, resulting in increased use of fluids, inotropes, and vasoconstrictors. However, 65% of surgeons did not think that ACEI should be withheld before surgery.

Clinical outcomes. Our findings that the pre-operative use of ACEI was an independent predictor of post-operative inotropic support are in line with most published data (13–15,26–29). Bertrand et al. (27) in a small randomized trial showed that more severe hypotensive episodes requiring vasoconstrictor treatment occur after induction of general anesthesia in patients chronically treated with ACEI and receiving the drug on the morning before operation, in comparison with those in whom ACEI were discontinued on the day before operation. Similar results were reported by Carrel et al. (14), Boeken et al. (28), and Deakin et al. (29), whereas the authors of other studies (18,19) did not find such an association between ACEI treatment and vasoplegia after cardiac surgery.

Perioperative hypotension is a well-known risk factor for the development of PDR in patients undergoing cardiac

surgery; however, the association between ACEI therapy and PRD after cardiac surgery is also controversial (30). Colson et al. (31) and Licker et al. (32) showed that creatinine clearance was maintained among patients who received an acute administration of ACEI before surgery compared with those receiving placebo. However, the effect of ACEI on kidney function may be different in patients who have been exposed to long-term ACEI treatment. Rady and Ryan (20) did not find a significant association between ACEI therapy and post-operative renal failure in patient undergoing cardiac surgery and chronically treated with ACEI. This study used quite a severe form of renal impairment as an end point but did not analyze the association with less severe renal dysfunction. Arora et al. (16) in a large observational studied demonstrated a significant association between pre-operative use of ACEI and acute renal impairment after cardiac surgery, and similar results also were shown after abdominal aortic surgery (33).

Table 3 Multivariate Analysis of In-Hospital Mortality in the Propensity-Matched Cohort

Variable	Odds Ratio	95% Confidence Interval	p Value
Age	1.14	1.03-1.26	0.007
ACEI	2.83	1.03-7.8	0.04
NHYA functional class III to IV	4.9	1.14-19.9	0.03

Abbreviations as in Table 1.

Table 4 Multivariate Analysis of Post-Operative Inotropic Support in the Propensity-Matched Cohort

Variable	Odds Ratio	95% Confidence Interval	p Value
Age	1.02	1.01-1.03	<0.0001
Female	1.32	1.14-1.53	0.0002
ACEI	1.17	1.07-1.29	<0.0001
Creatinine, mol/l	1.007	1.004-1.01	<0.0001
CAD	1.39	1.21-1.59	<0.0001
Left main disease	1.28	1.04-1.58	0.017
EF <50%	1.74	1.41-2.14	<0.0001
Redo surgery	1.75	1.07-2.87	0.027
Emergent operations	7.45	3.1-17.8	<0.0001
Urgent operations	1.21	1.01-1.45	<0.0001

Abbreviations as in Table 1.

Our study clearly showed that ACEI treatment is an independent risk factor for PRD defined as a serum creatinine level $>200 \mu\text{mol/l}$ plus an increase of at least 1.5 times pre-operative baseline concentrations. It is most likely that this PRD occurs when renal perfusion pressure cannot be sustained because of substantial decreases in mean arterial pressure with an increased use of vasoconstrictor and inotropic drugs.

It has been shown that even a small increase in serum creatinine after cardiac surgery is associated with increased risk for deaths in these patients (16,34). Indeed, our data showed that pre-operative ACEI therapy increased the risk of death by 2-fold in patients undergoing CABG. The fact that other studies have failed to demonstrate similar results (20,35) is very likely because of inadequate sample size with insufficient power to detect differences in mortality, a very infrequent event after CABG. In addition, it seems that ACEI therapy may increase adverse events during the first 3 months and does not improve clinical outcome up to 3 years after surgery (17). Conversely, authors of the APRES (Angiotensin-Converting Enzyme Inhibition Post Revascularization Study) (36) showed long-term treatment with ramipril after invasive revascularization significantly reduced the incidence of the composite end point of cardiac death, acute MI, or clinical heart failure.

There seems to be increasing evidence to suggest that ACEI have the potential to prevent post-operative AF, possibly because of its ability to decrease left atrial stretching secondary to afterload reduction and atrial remodeling (37,38). However, it is important to understand that the publication of 2 meta-analyses (38,39) did not include any cardiac surgical patients and, therefore, the evidence for this potential benefit in cardiac surgery is weak. A study by White et al. (40) in patients undergoing CABG and valve surgery failed to show statistically significant association between the pre-operative ACEI use and reduction in post-operative AF events. Our data show that ACEI therapy before CABG increases the risk of post-operative AF in a very large cohort of patients. Contrary to the study by White et al. (40), our study examined only patients undergoing CABG and had a much larger sample size.

Pre-operative administration of ACEI in patients undergoing CABG contributes to the lowering of systemic vascular resistance and vasoplegia in the early post-operative phase, resulting in hypotension and requiring the administration of more fluids and inotropic and/or vasoconstrictor

Table 6 Multivariate Analysis of Post-Operative Atrial Fibrillation in the Propensity-Matched Cohort

Variable	Odds Ratio	95% Confidence Interval	p Value
Age	1.03	1.02–1.04	<0.0001
COPD	1.38	1.10–1.76	0.005
History of AF	2.33	1.37–3.96	0.0011
ACEI	1.33	1.17–1.51	<0.0001

Abbreviations as in Table 1.

drugs (13–15,26–29). It is known that hypotension and volume overload are risk factors for new onset of post-operative AF (41). In addition, perioperative use of inotropics and/or vasoconstrictor drugs may increase the risk of this arrhythmia after cardiac surgery (42,43). All these elements, combined with the other predisposing and intra-operative risk factors, in presence of triggers (atrial premature contractions, imbalance of autonomic nervous system electrolyte imbalance) might induce the new onset of post-operative AF.

Study limitations. This study is based on the retrospective analysis of our large, institutional, observational, prospectively collected database. Propensity score analysis is simply a method for reducing bias in observational studies when randomization to treatment groups is not possible and the matching was limited by available variables. Our database did not allow distinction between the use of ACEIs or angiotensin receptor blockers, and no information was recorded about the timing and specific drug used or dose. We did not consider the years of surgery as a further potential confounder. However, during our study period there were no changes regarding surgical or anaesthetic technique or comorbidities of our patients. The overall rate of mortality remained approximately 1% during the study period. Finally, although the magnitude of risk associated with ACEIs was less than other variables, their contribution is still significantly relevant to adverse clinical outcome.

Conclusions

Pre-operative ACEI use is associated with worse early clinical outcomes in patients undergoing CABG. Omitting ACEIs before surgery and restarting them post-operatively might be a reasonable approach to improve early outcomes while retaining the benefits of their cardioprotective effects after CABG.

Reprint requests and correspondence: Dr. Massimo Caputo, Bristol Heart Institute, Cardiac Surgery, Level/Upper Maudlin Street, Bristol BS2 8HW, United Kingdom. E-mail: M.Caputo@bristol.ac.uk.

REFERENCES

1. The Heart Outcomes Prevention Evaluation Study Investigators. Effects of an angiotensin-converting enzyme inhibitor, ramipril, on cardiovascular events in high-risk patients. *N Engl J Med* 2000;342:145–6.

Table 5 Multivariate Analysis of Post-Operative Renal Dysfunction in the Propensity-Matched Cohort

Variable	Odds Ratio	95% Confidence Interval	p Value
Age	1.06	1.02–1.09	0.0004
ACEI	1.7	1.22–2.38	0.0002
Creatinine, mol/l	1.04	1.03–1.06	<0.0001
NYHA functional class III to IV	1.9	1.1–3.28	0.021

Abbreviations as in Table 1.

2. Flather YS, Kober L, Pfeffer M, et al., for the ACE-inhibitor Myocardial Infarction Collaborative Group. Long term ACE-inhibitor therapy in patients with heart failure or left ventricular dysfunction: a systematic view of data from individual patients. *Lancet* 2000;355:1575–81.
3. Lonn E, Shaikhholeslami R, Yi Q, et al. Effects of ramipril on left ventricular mass and function in Cardiovascular Patients with controlled Blood pressure and with preserved left ventricular ejection fraction. A substudy of the Heart Outcomes Prevention Evaluation (HOPE) Trial. *J Am Coll Cardiol* 2004;43:2200–6.
4. The EUROpean trial On reduction of cardiac events with Perindopril in stable coronary Artery disease Investigators. Efficacy of perindopril in reduction of cardiovascular events among patients with stable coronary artery disease: randomised, double-blind, placebo-controlled, multicentre trial (the EUROPA study). *Lancet* 2003;362:782–8.
5. ACE Inhibitor Myocardial Infarction Collaborative Group. Indications for ACE inhibitors in the early treatment of acute myocardial infarction. Systematic overview of individual data from 100000 patients in randomized trials. *Circulation* 1998;97:2202–12.
6. Pfeffer MA, Braunwald E, Moy LA, et al. Effect of captopril on mortality and morbidity in patients with left ventricular dysfunction after myocardial infarction. Results of the survival and ventricular enlargement trial. The SAVE Investigators. *N Engl J Med* 1992;327:669–77.
7. Pfeffer MA. Left ventricular remodelling after acute myocardial infarction. *Annu Rev Med* 1995;46:455–66.
8. Okin PM, Devereux RB, Jenn S, et al. Regression of electrocardiographic left ventricular hypertrophy by losartan versus atenolol: the Losartan Intervention for Endpoint reduction in Hypertension (LIFE) Study. *Circulation* 2003;108:684–90.
9. Schmieder RE, Schlaich MP, Klingbeil AU. Reversal of left ventricular hypertrophy in essential hypertension: a meta-analysis of randomized double-blind studies. *JAMA* 1996;275:1507–13.
10. Miyazaki M, Sakonjo H, Takai S. Anti-atherosclerotic effects of an angiotensin-converting enzyme inhibitor and an angiotensin II antagonist in cynomolgus monkeys fed a high cholesterol diet. *Br J Pharmacol* 1999;128:523–29.
11. Brown NJ, Argirbasli MA, William GH, Litchfield WR, Vaughan DE. Effect of activation and inhibition of the renin-angiotensin system on plasma PAI-1. *Hypertension* 1998;32:965–71.
12. Brasier A, Recinos A, Eleidrisi MS. Vascular inflammation and the renin-angiotensin system. *Atheroscler Thromb Vasc Biol* 2002;22:1257–66.
13. Tuman KJ, McCarthy RJ, O'Connor CJ, Holm WE, Ivankovich AD. Angiotensin-converting enzyme inhibitors increase vasoconstrictor requirements after cardiopulmonary bypass. *Anesth Analg* 1995;80:473–79.
14. Carrel T, Englberger L, Mohacs P, Neidhart P, Schmidli J. Low systemic vascular resistance after cardiopulmonary bypass: incidence, etiology, and clinical importance. *J Card Surg* 2000;15:347–53.
15. Argenziano M, Chen JM, Choudhri AF, et al. Management of vasodilatory shock after cardiac surgery: identification of predisposing factors and use of a novel pressor agent. *J Thorac Cardiovasc Surg* 1998;116:973–80.
16. Arora P, Rajagopal S, Ranjan R, et al. Pre-operative use of angiotensin-converting enzyme inhibitors/angiotensin receptor blockers is associated with increased risk for acute kidney injury after cardiovascular surgery. *Clin J Am Soc Nephrol* 2008;3:1266–73.
17. Rouleau JL, Warnica WJ, Baillet R, et al. Effects of Angiotensin-converting enzyme inhibition in low-risk patients early after coronary artery bypass surgery. *Circulation* 2008;117:24–31.
18. Pigott W, Nagle C, Allman K, Westaby S, Edvans RD. Effect of omitting regular Ace inhibitor medication before cardiac surgery on haemodynamic variables and vasoactive drug requirements. *Br J Anaesth* 1999;83:715–20.
19. Webb CM, Underwood R, Anagnostopoulos C, et al. The effect of angiotensin converting enzyme inhibition on myocardial function and blood pressure after coronary artery bypass surgery—a randomised study. *Eur J Cardiothorac Surg* 1998;13:42–48.
20. Rady MY, Ryan T. The effects of pre-operative therapy with angiotensin-converting enzyme inhibitors on clinical outcome after cardiovascular surgery. *Chest* 1998;114:487–94.
21. Devbhandari MP, Balasubramanian SK, Codispoti M, Nzewi OC, Prasad SU. Pre-operative angiotensin-converting enzyme inhibition can cause severe post CPB vasodilatation—current UK opinion. *Asian Cardiovasc Thorac Ann* 2004;12:346–9.
22. Blackstone EH. Comparing apples and oranges. *J Thorac Cardiovasc Surg* 2002;123:8–15.
23. Ascione R, Caputo M, Calori G, et al. Predictors of atrial fibrillation after conventional and beating heart coronary surgery. A prospective randomised study. *Circulation* 2000;102:1530–5.
24. Watters M, Ascione R, Ryder I, et al. Hemodynamic changes during beating heart coronary surgery with the “Bristol Technique.” *Eur J Cardiothorac Surg* 2001;19:34–40.
25. Lazar HL. All coronary artery bypass graft surgery patients will benefit from angiotensin-converting enzyme inhibitors. *Circulation* 2008;117:6–8.
26. Raja SG, Fida N. should angiotensin converting enzyme inhibitors/angiotensin II receptor antagonists be omitted before cardiac surgery to avoid post-operative vasodilation? *Interact Cardiovasc Thorac Surg* 2008;7:470–5.
27. Bertrand M, Godet G, Meerschaert K, Brun L, Salcedo E, Coriat P. Should the angiotensin II antagonists be discontinued before surgery? *Anesth Analg* 2001;92:26–30.
28. Boeken U, Feindt P, Mohan E, et al. Post-perfusion syndrome and disturbed microcirculation after cardiac surgery: the role of angiotensin-converting-enzyme inhibitors. *Thorac Cardiovasc Surg* 1999;47:347–51.
29. Deakin CD, Dalrymple-Hay MJR, Jones P, Monro JL. Effects of angiotensin converting enzyme on systemic vascular resistance and vasoconstrictor requirements during hypothermic cardiopulmonary bypass. *Eur J Cardiothorac Surg* 1998;13:546–50.
30. Rosner MH, Okusa MD. Acute kidney injury associated with cardiac surgery. *Clin J Am Soc Nephrol* 2006;1:19–32.
31. Colson P, Ribstein J, Mimran A, Grolleau D, Chaptal PA, Requeleuil B. Angiotensin converting enzyme inhibition on blood pressure and renal function during open heart surgery. *Anesthesiology* 1990;72:23–7.
32. Licker M, Neidhart P, Lustenberger S, et al. Pre-operative inhibition of angiotensin converting enzyme improves systemic and renal hemodynamic changes during aortic abdominal surgery. *Br J Anesth* 1996;76:632–9.
33. Cittanova ML, Zubicki A, Savu C, et al. The chronic inhibition of angiotensin enzyme inhibitors impairs post-operative renal function. *Anesth Analg* 2001;93:1111–5.
34. Praught ML, Shlipak MG. Are small changes in serum creatinine an important risk factor? *Curr Opin Nephrol Hypertens* 2005;14:265–70.
35. Weightman WM, Gibbs NM, Sheminant MR, Whitford EG, Mahon BD, Newman MAJ. Drug therapy before coronary artery surgery: nitrates are independent predictors of mortality and β -adrenergic blockers predict survival. *Anesth Analg* 1999;88:286–91.
36. Kjølter-Hansen L, Steffensen R, Grande P. The angiotensin-converting enzyme Inhibition post revascularization study (APRES). *J Am Coll Cardiol* 2000;35:881–8.
37. Lally JA, Gnall EM, Seltzer J, Kowey PR. Non-antiarrhythmic drugs in atrial fibrillation: a review of non-antiarrhythmic agents in prevention of atrial fibrillation. *J Cardiovasc Electrophysiol* 2007;18:1222–8.
38. Jibrini MB, Molnar J, Arora RR. Prevention of atrial fibrillation by way of abrogation of the renin-angiotensin system: a systematic review and meta-analysis. *Am J Ther* 2008;15:36–43.
39. Anand K, Mooss AN, Hee TT, Mohiuddin SM. Meta-analysis: inhibition of renin-angiotensin system prevents new-onset atrial fibrillation. *Am Heart J* 2006;152:217–22.
40. White CM, Kluger J, Lertsburapa K, Faheem O, Coleman CI. Effect of pre-operative angiotensin converting enzyme inhibitor or angiotensin receptor blocker use on the frequency of atrial fibrillation after cardiac surgery: a cohort study from the atrial fibrillation suppression trials II and III. *Eur J Cardiothorac Surg* 2007;31:817–20.
41. Echahidi N, Pibarot P, O'Hara G, Mathieu P. Mechanisms, prevention, and treatment of atrial fibrillation after cardiac surgery. *J Am Coll Cardiol* 2008;51:793–801.
42. Argalious M, Motta P, Khandwala F, et al. “Renal dose” dopamine is associated with the risk of new-onset atrial fibrillation after cardiac surgery. *Crit Care Med* 2005;33:1327–32.
43. Kalman JM, Munawar M, Howes LG, et al. Atrial fibrillation after coronary artery bypass grafting is associated with sympathetic activation. *Ann Thorac Surg* 1995;60:1709–15.

Key Words: angiotensin-converting enzyme inhibitors ■ coronary artery bypass grafting ■ outcome.

Effects of Angiotensin-Converting Enzyme Inhibitor Therapy on Clinical Outcome in Patients Undergoing Coronary Artery Bypass Grafting
Antonio Miceli, Radek Capoun, Carlo Fino, Pradeep Narayan, Alan J. Bryan, Gianni D. Angelini, and Massimo Caputo
J. Am. Coll. Cardiol. published online Aug 12, 2009;
doi:10.1016/j.jacc.2009.07.008

This information is current as of September 29, 2009

Updated Information & Services	including high-resolution figures, can be found at: http://content.onlinejacc.org/cgi/content/full/j.jacc.2009.07.008v1
References	This article cites 42 articles, 27 of which you can access for free at: http://content.onlinejacc.org/cgi/content/full/j.jacc.2009.07.008v1#BIBL
Rights & Permissions	Information about reproducing this article in parts (figures, tables) or in its entirety can be found online at: http://content.onlinejacc.org/misc/permissions.dtl
Reprints	Information about ordering reprints can be found online: http://content.onlinejacc.org/misc/reprints.dtl